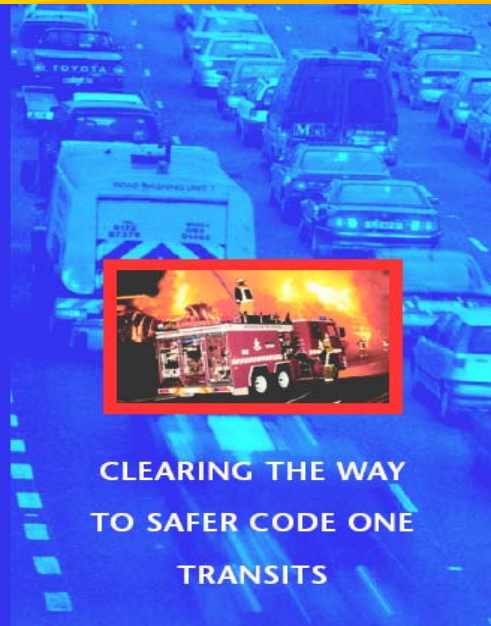


Global Frequency Warning System



CLEARING THE WAY
TO SAFER CODE ONE
TRANSITS

The Global Frequency Warning (GFW) system is a short-range radio re-broadcast system, designed to provide automatic, accurate and immediate messages to inform road users of an emergency situation.

MEETING EMERGENCY SERVICES NEEDS

- Radio communication system to improve road safety.
- Advance public warning of an emergency situation.
- Provide public with instructions to avoid traffic hazards.
- Warn road users of an approaching emergency vehicle.
- Ability to warn road users of a fixed dangerous situation.
- Improve traffic management.
- Improve emergency vehicle response time.
- Reduce stress to emergency personnel and the public.

Patented Technology WORLD LEADERSHIP

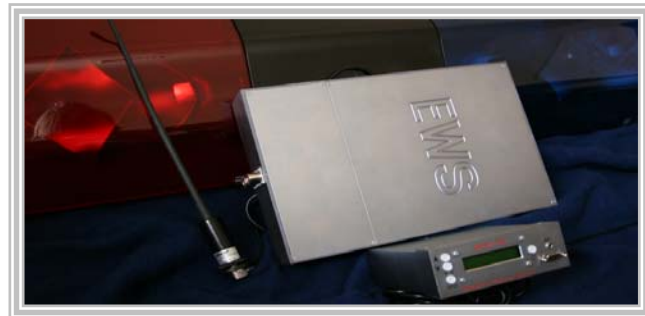
The Problem

Statistics indicate that most developed nations are experiencing issues with existing response times of emergency services vehicles and with safety (both to the public and emergency service personnel) when those vehicles undertake high-speed transits.

Present warning systems (flashing lights and sirens) have not kept pace with dramatic advances in modern vehicle sound reduction technology and that of urban development.

The unfortunate impact of this is that the public are unable to recognize and react in a timely manner and avoid potential dangerous situations.

So how can road users receive meaningful warnings, quickly, effectively and automatically?

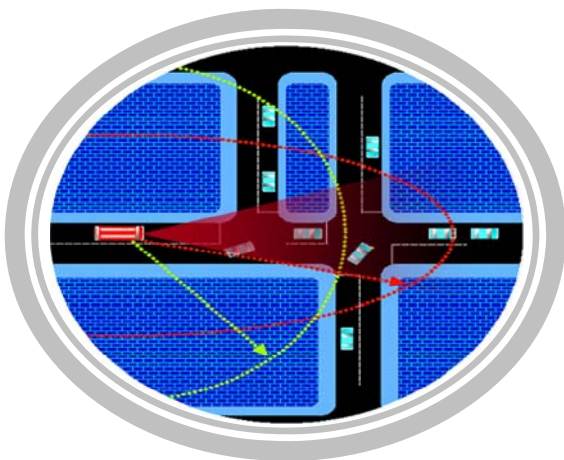


GFW Solution

Emergency Warning Systems Pty Ltd has a solution which will enhance the current warning mechanisms used by emergency service organizations. It will allow the dissemination of meaningful warnings in a timely manner to those road users at most risk – those in the vicinity of an approaching emergency vehicle. The GFW (mobile application) is an emergency warning system that over-broadcasts on existing radio frequencies over a specified distance to provide accurate, timely and meaningful information to road users. Installed in an emergency vehicle, the GFW will broadcast user defined messages to the surrounding vehicle's radio providing instructions on actions to be taken.

The GFW is the only solution WORLD WIDE that provides the ability to nominate/exclude frequencies, measure radio signal strength and determine accurate transmission coverage based on real-time sampling of existing frequencies in the area - a critical factor to ensure there is minimal unnecessary disruption.

All the public require is a standard radio. All you need is a GFW.



BE AWARE, SAVE LIVES

- "Code-1" transits
- Road Accidents
- Crime Scenes
- Black Spot Warnings
- Road Traffic Authorities
- Bush Fire Emergencies
- Terrorist/Siege
- Train Level Crossings